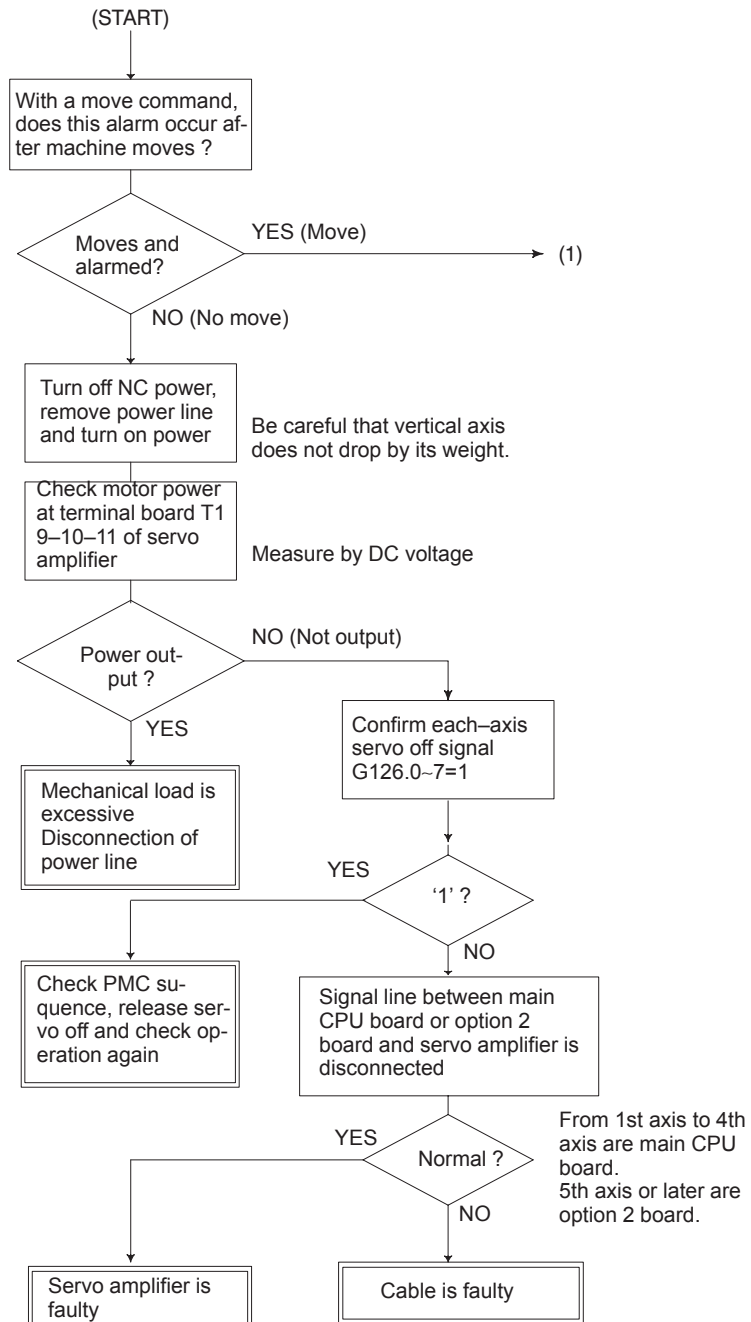
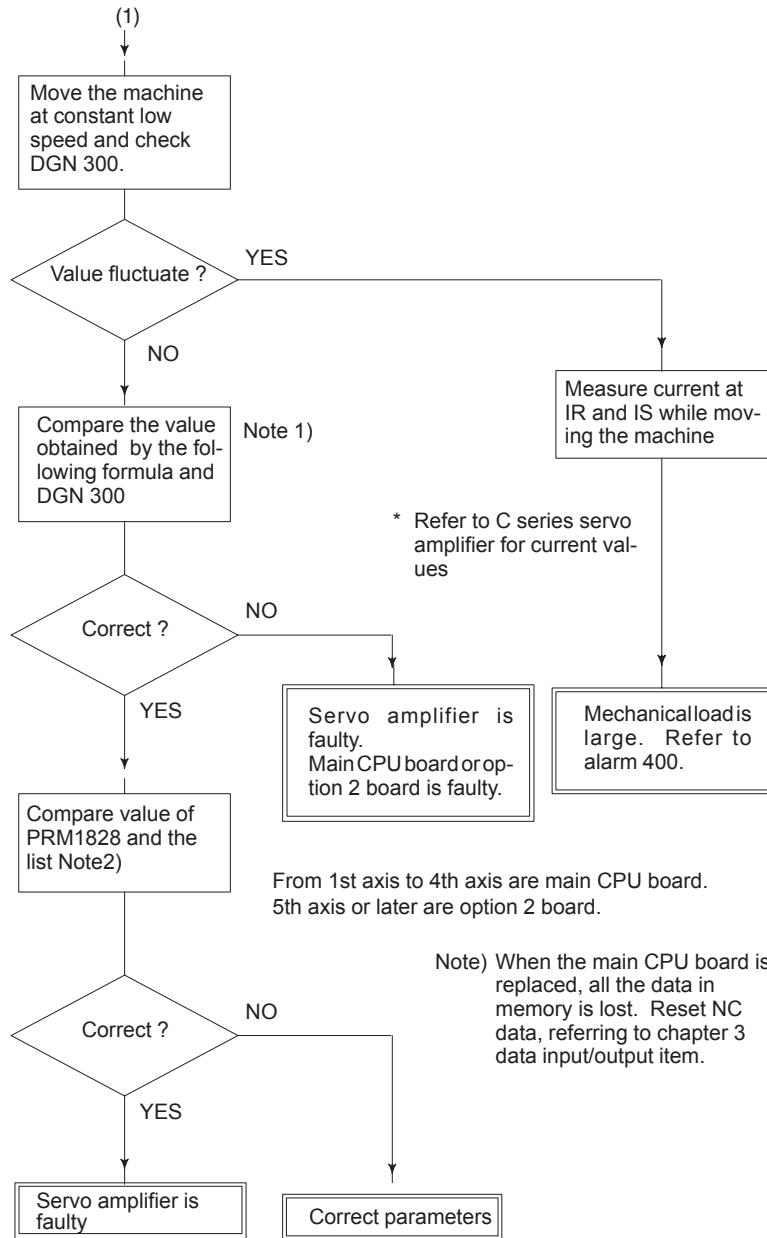


8.21 ALARM 411 (EXCESSIVE POSITION ERROR DURING MOVE)

Position error amount during movement (DGN 300) exceeds a value set by parameter 1828.





NOTE

1 Position error = $\frac{\text{Feed rate (mm/min)}}{60 \times \text{PRM1825}} \times \frac{1}{\text{Detection unit}}$

2 Parameter 1828yPosition error at rapid traverse 1.2