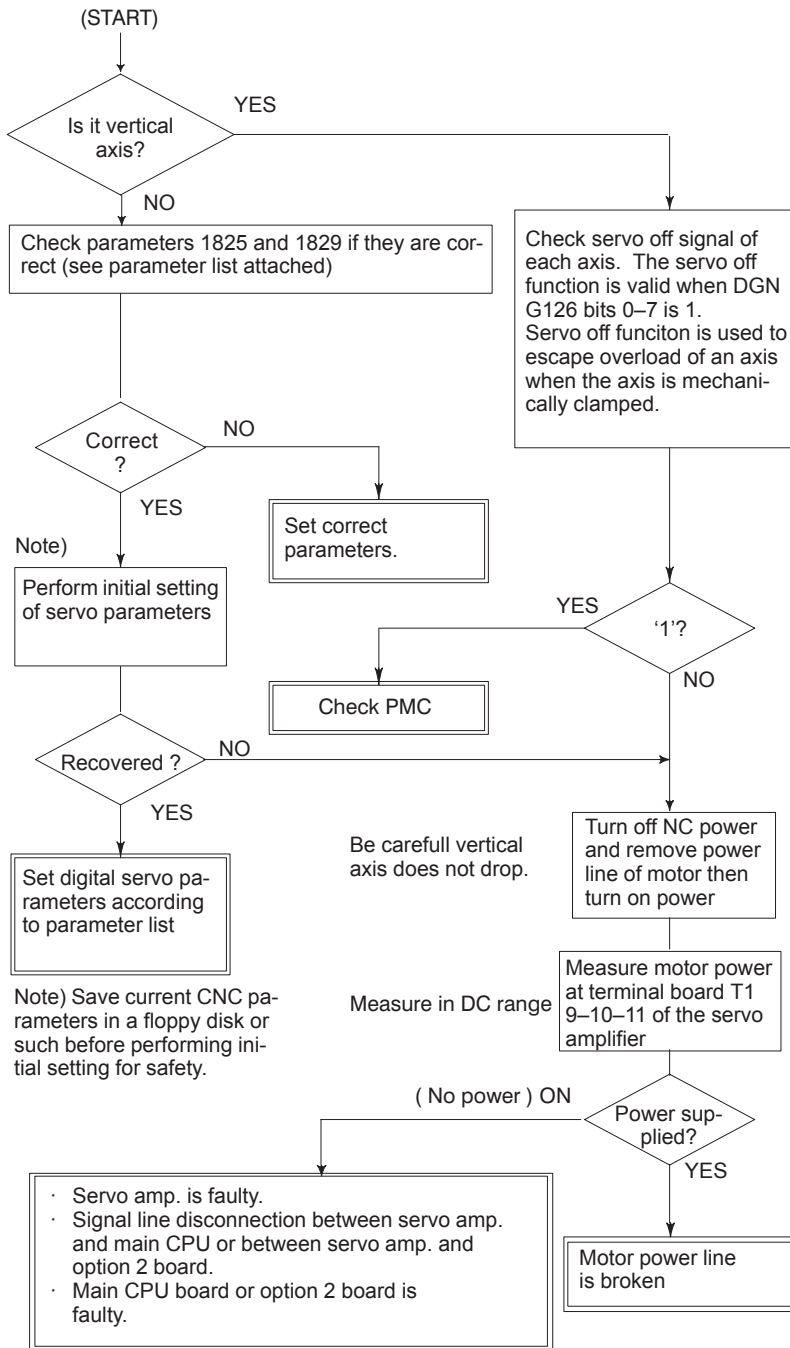


**8.20  
ALARM 410  
(EXCESSIVE  
POSITION ERROR  
AMOUNT DURING  
STOP)**

Position error amount at stop (DGN 300) exceeds a value set by parameter No. 1829.



**CAUTION**

When the main board is replaced, all the data stored in memory is lost. Set NC data again, referring to chapter 3 "data input/output" .