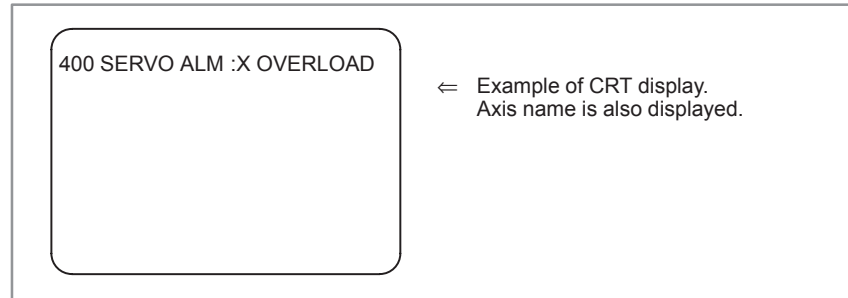


8.17 ALARM 400 (OVERLOAD)

Amplifier or overheating of motor is detected.



Points

Confirm the detail by the diagnostic function of CNC.

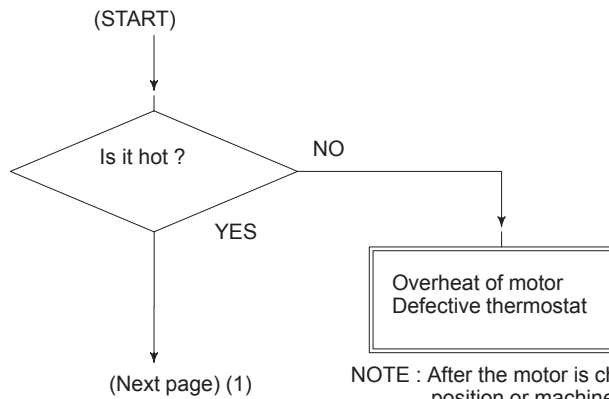
		#7	#6	#5	#4	#3	#2	#1	#0
DGN	0200	OVL							

#7(OVL): 1 OVERLOAD ALARM is displayed.

Check details of alarms by DGN 201.

		#7	#6	#5	#4	#3	#2	#1	#0
DGN	0201	ALD							
		↓							
		1	Overheat of servo motor						
		0	Overheat of servo amplifier						

Overheat of servo motor



NOTE : After the motor is changed, reference position or machine's reference point is different from the one before replacement. Set it again.

● Overheat of servo amplifier

LED 6 of servo amplifier is lit

