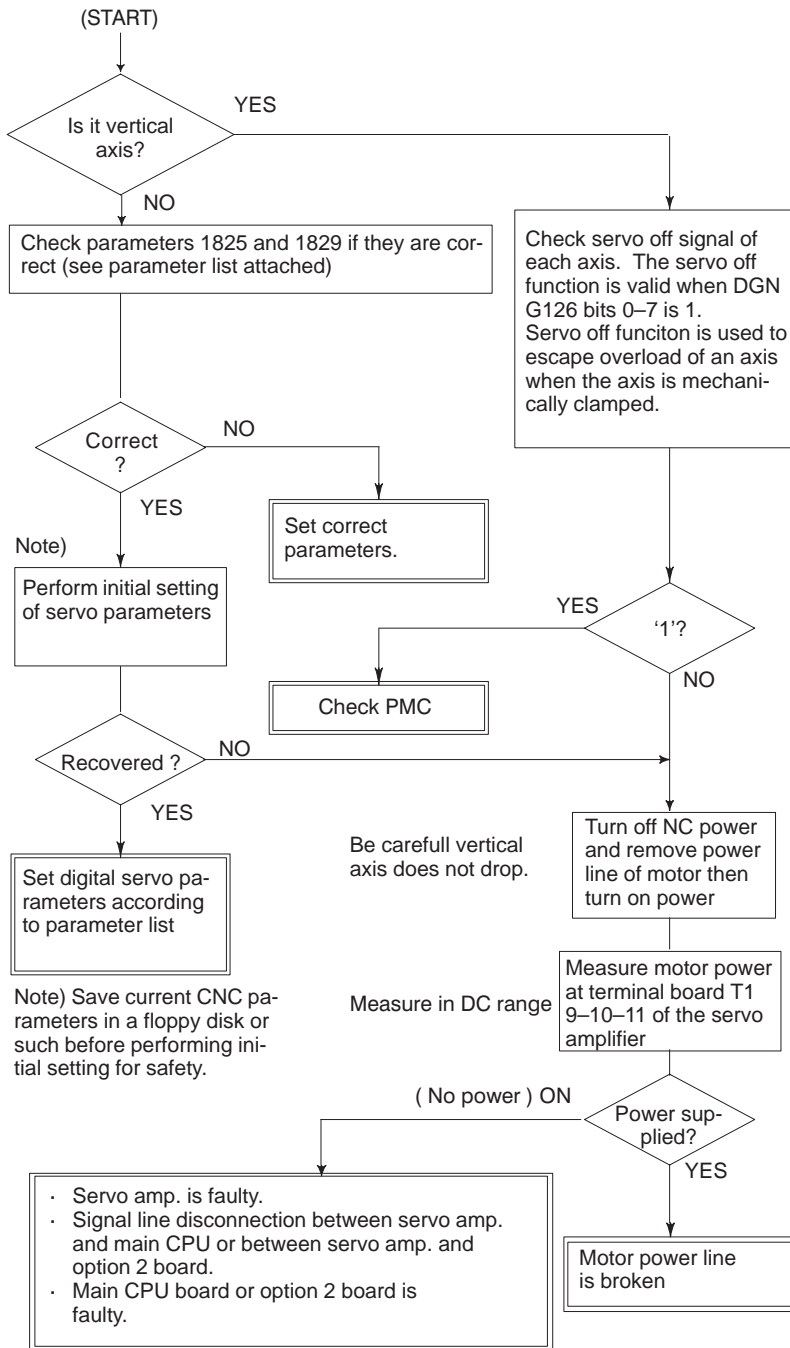


## 8.20 ALARM 410 (EXCESSIVE POSITION ERROR AMOUNT DURING STOP)

Position error amount at stop (DGN 300) exceeds a value set by parameter No. 1829.



### CAUTION

When the main board is replaced, all the data stored in memory is lost. Set NC data again, referring to chapter 3 "data input/output" .